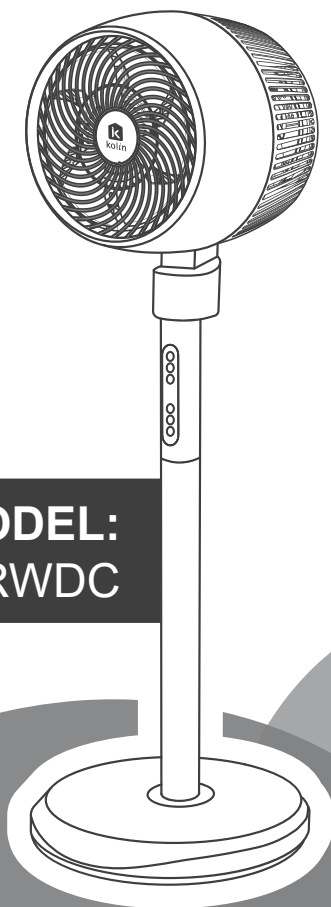




OWNER'S MANUAL

12" DC INVERTER
STAND TYPE

AIR 
CIRCULATOR



MODEL:
KCF-12SRWDC

 Kolin Phils. Int'l., Inc.

Please read this owner's manual before operation and retain it for future reference.

TABLE OF CONTENTS

I. Introduction: Overview of the Product	1
II. Safety Instructions	1
III. Benefits	3
IV. Circuit Diagram	3
V. Structure Diagram	4
VI. Operating Instructions	4
VII. Maintenance Instructions	6
VIII. Troubleshooting	8

Please carefully read and retain this manual for future reference. This manual has undergone thorough verification, but in the event of any misprints or misleading information, we reserve the right to provide the correct interpretation. Additionally, please note that our products are subject to continuous updates, which may include changes in technology, appearance, color, etc., without prior notice. The actual product and its nameplate will always take precedence. Any changes will be reflected in the updated version of the manual.

I. INTRODUCTION: OVERVIEW OF THE PRODUCT

Air Circulator

Thank you for choosing Kolin Air Circulator, a versatile device designed to enhance air circulation in any space. Unlike traditional fans, this air circulator creates a continuous, multi-directional flow that ensures even temperature distribution throughout the room. With advanced airflow technology, it efficiently moves air across large areas while maintaining quiet operation, making it perfect for use in bedrooms, living rooms, and offices. Its compact, stylish design blends seamlessly into any décor, and its energy-efficient performance helps reduce electricity costs. Experience improved air quality and comfort with Kolin Air Circulator, your ideal solution for maintaining a fresh and pleasant indoor environment.

II. SAFETY INSTRUCTIONS

To ensure safe and proper use of your Kolin Air Circulator, kindly see the meaning of the symbols below:



Your personal and property safety is of utmost importance. To minimize the risk property damage and personal injury or death, it is crucial to follow the safety guidelines provided in the Manual. Make sure to read and understand the Manual before operating the product. Neglecting these instructions can lead to complications and undesirable consequences. Prioritize a thorough understanding of the Manual for a smooth and safe user experience.



These precautions pertain to installation, use, and maintenance.

Electrical Safety

- Before plugging in the air circulator, carefully check the power cord/ adapter for any damage. If the cord is damaged, do not use the circulator. Instead, contact the Kolin hotline or an authorized service partner for immediate assistance.
- Always operate the air circulator from a power source that matches the specified voltage, frequency, and rating indicated on the product identification marking.

Power Adapter

- This device should only be used with the power supply unit provided.
- Always turn off the air circulator before unplugging the adapter. To unplug, grip the adapter and pull it from the outlet—never pull by the power cord.
- Keep the air circulator close to the outlet it's plugged into. Using an extension cord is not recommended.
- Always turn off and unplug the air circulator when not in use or before moving, cleaning, or servicing it.
- Unplug the adapter when the fan is not in use for extended periods.
- Never place the power cord near heat sources.
- Do not cover the cord with rugs, carpets, or other materials, and avoid placing it under furniture or appliances.
- To prevent tripping hazards, place the cord where it won't be walked over and ensure it is coiled safely.
- A loose connection between the outlet and plug may cause overheating and damage the adapter. If the outlet is loose or worn, contact a qualified electrician for replacement.

General Safety Instructions

Read this instruction manual thoroughly before using the appliance and save it for future reference.

WARNING: When using an electrical appliance, basic safety precautions should always be followed to reduce the risk of fire, electrical shock, and personal injury.

General Guidelines

- Ensure that the electrical specifications of this appliance are compatible with your installation.
- This appliance is not intended for use by persons (including children) with reduced physical, sensory, or mental capabilities, or lack of experience and knowledge, unless they are supervised or instructed on how to use the appliance by someone responsible for their safety.
- Children aged 8 years and above, and persons with reduced physical, sensory, or mental capabilities or lack of experience and knowledge, may use this appliance if supervised or instructed in its safe use, and understand the hazards involved. Children should not play with the appliance.
- Cleaning and maintenance should not be performed by children without supervision.
- Children should be supervised to ensure they do not play with the appliance.
- Ensure the air circulator is completely assembled before operation.
- Before turning on the air circulator, make sure of the following:
 - The blades are not deformed.
 - The blades do not touch the fan cover.
 - The cover is in the correct position and not deformed.
- The air circulator should not be exposed to dripping or splashing liquids, and no objects filled with liquids (e.g., vases) should be placed on the product.
- Do not use the air circulator near water, such as bathtubs, bathrooms, swimming pools, etc.
- To prevent electrical hazards, do not immerse the appliance in water or other liquids, and do not use it near water.
- This appliance is for indoor use only.
- Do not place objects on top of the unit.
- Do not unplug the unit with wet hands, as electrical shock may occur.
- Do not carry the appliance while it is operating.
- Do not use the air circulator in areas of high humidity, temperatures above 40°C, or dusty environments.
- Place the air circulator on a secure, level surface, out of reach of children, to prevent accidents.
- Unauthorized use and technical modifications to the appliance can lead to life-threatening danger.
- Do not push any objects into the appliance, and do not disassemble it.
- The appliance should be disconnected from the power source during service and when replacing parts.

Caution

- Always disconnect the air circulator from the power supply before moving it to a different location.
- Unplug the air circulator when not in use.
- Avoid placing the air circulator too close to walls or window curtains, as this may block airflow.
- Do not insert any objects or body parts into the air circulator while it is operating.
- Clean the air circulator with a damp cloth, but do not flush it directly with water.
- Avoid placing the air circulator near heat sources or open flames.
- Only qualified professionals should perform repairs on the air circulator.
- Only move or adjust the air circulator after it has stopped rotating. Avoid putting your hands or any objects into the grille or contacting the blades to prevent accidents and avoid overturning the circulator due to obstruction of the fan's motion.
- Before use, check that the steering mechanism works correctly under no-load power. During test operation, ensure there are no abnormal vibrations or sounds. If abnormalities are found, stop the machine and inspect it immediately.
- Do not cover the guard or operate the air circulator too close to curtains, furniture, or other objects.
- Do not place objects on top of the air circulator.
- Do not obstruct the air outlet, and ensure there is at least 1 meter of space in front and behind the fan.

By diligently following these safety instructions, you can prevent accidents or hazards while using your Kolin air circulator.

Environmental Protection



CAUTION! Electrical products must not be disposed of with household waste. They should be taken to a communal collection point for environmentally friendly disposal in accordance with local regulations. Contact your local authorities or retailer for advice on recycling. The packaging material is recyclable. Dispose of the packaging in an environmentally friendly manner and make it available for the recyclable material collection service.

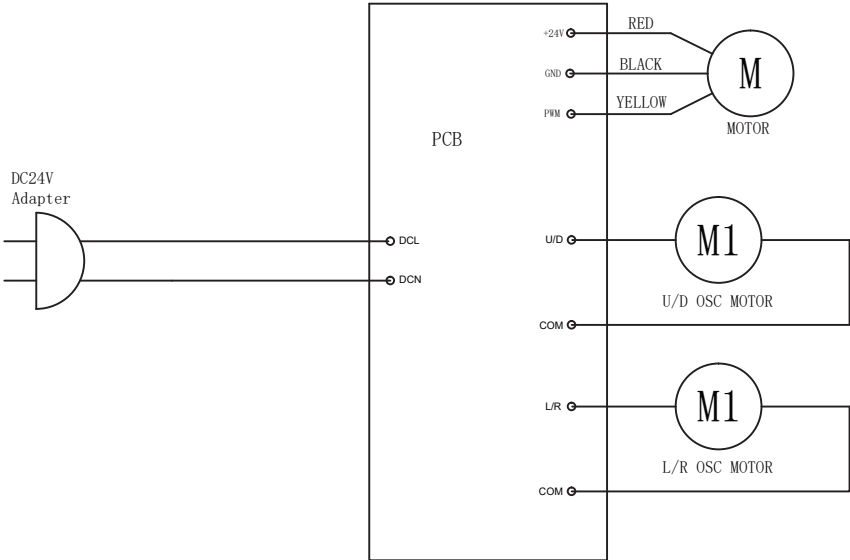
III. BENEFITS

- **Improved Air Circulation:** Distributes air evenly throughout the room for enhanced comfort.
- **Energy Efficiency:** Advanced inverter technology reduces energy consumption, saving on electricity bills.
- **Quiet Operation:** Operates quietly, providing a peaceful environment for your home.
- **Compact Design:** Easy to place in any room due to its small footprint.
- **Durability:** Built with high-quality materials for long-lasting performance.
- **Low Maintenance:** Fewer moving parts and high-quality components reduce the need for frequent maintenance.
- **Environmental Impact:** Consumes less energy, reducing your carbon footprint.

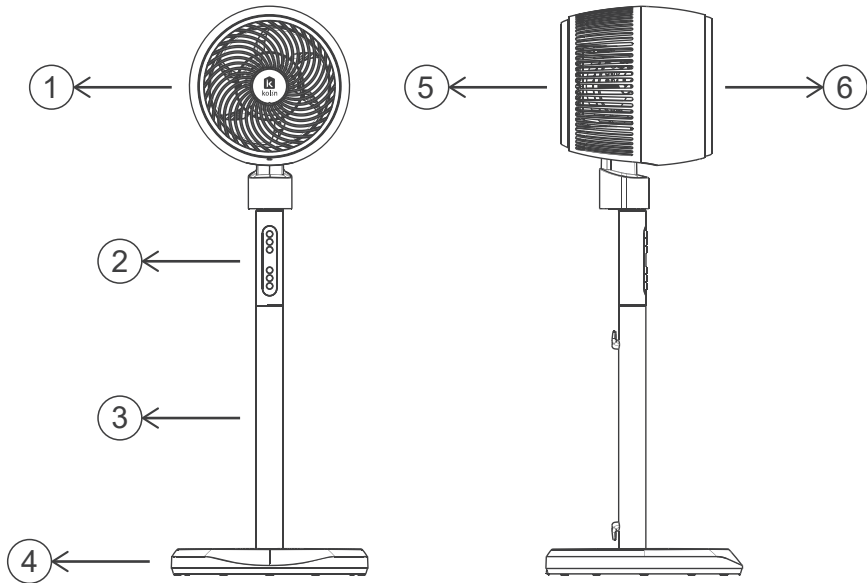
Product Specification

KCF-12SRWDC			
Input Voltage	DC24V===	Energy Efficiency Factor	0.81
Rated Power	26 W		
Rated Current	0.25 A	Product Size	361x361x1046 mm
Max. Airflow Volume	21 m³/min	Net Weight	3.98 kg
		Climate	T
POWER ADAPTER SPECIFICATION			
Input Data		AC230V~ / 60Hz	
Output Data		DC24V===, 1.50 A	

IV. CIRCUIT DIAGRAM



V. STRUCTURE DIAGRAM



1. Main motor body
2. Control panel
3. Strut pipe
4. Base
5. Rear guard
6. Front

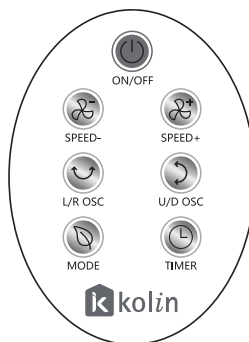
VI. OPERATING INSTRUCTIONS

Important: Ensure that you have read all the safety warnings before operating this unit for the first time.

- Always operate the fan from a power source that matches the specified voltage, frequency, and rating indicated on the nameplate.
- Ensure the fan is completely assembled before operation.
- Place the fan in solid flat surface.



Control Panel



Remote Controller



Power On / Off:

- Press the power button to start the fan. By default, the fan will start at Gear 1 (with a brief Gear 3 output for the first three seconds). The digital screen will display "1".
- After powering on, a buzzer will sound, and the fan will enter standby mode.
- Press the power button again to turn off the fan, returning it to standby mode.
- After 15 seconds of inactivity, the screen dims to half brightness. The brightness returns to full when any key is pressed, except for the power on/offkey.



Speed Button (+ / -):

- Press the Gear button to adjust the fan speed. The digital screen will display the current gear.
- Press repeatedly to cycle through the available speeds: 1 → 2 → 3 → 4 → 5 → 6 → 7 → 8 → 1, looping continuously.



Left / Right Oscillation Button:

- After powering on, press this button to activate left and right oscillation. Press again to stop oscillation.



Up / Down Oscillation Button:

- After powering on, press this button to activate up and down oscillation. Press again to stop oscillation.



Timer Button:

- The timer allows you to set a shutdown time between 1 and 8 hours.
- Press the Timer button; the digital screen will display "1", and the timer icon will light up. After 5 seconds, if no further action is taken, the timer will default to a 1-hour setting.
- Each press of the Timer button will cycle through the options: 1 → 2 → 3 → 4 → 5 → 6 → 7 → 8 → Off, repeating in a loop.
- The timer will count down, and the remaining time will be displayed (e.g., if set for 4 hours, after 1 hour, the display will show 3 hours).
- Any new timer setting will override the previous one. For instance, if a 1-hour timer is set, and after 40 minutes you reset it to 4 hours, the countdown will restart from 4 hours.
- While the timer is active, other functions (e.g., gear adjustment or oscillation) will not interrupt the countdown.



Natural Wind Mode Button:

- In working mode, press this button to activate the "Natural Wind" mode. The corresponding icon will light up.
- The sequential order of the wind settings is: natural wind → sleep wind → normal wind → natural wind → ...and so on in a repeating loop..

VII. MAINTENANCE INSTRUCTIONS

⚠ WARNING:

- Always unplug the fan from the power source before cleaning or performing any maintenance.
- Avoid handling the plug with wet hands to prevent the risk of electric shock or injury.
- Use only a soft, damp cloth to gently wipe the outer surfaces of the fan.
- To clean between the grilles, use a pipe cleaner, flexible dust wand, vacuum cleaner, or compressed air to remove dust.
- **DO NOT** immerse the fan in water or allow water to enter the motor housing.
- **DO NOT** use gasoline, paint thinner, or other harsh chemicals to clean the fan.

For storage, you can leave the fan assembled and cover it to protect it from dust. Store the fan in a cool, dry place.

How to Clean:

⚠ Caution

- Before cleaning or performing any maintenance, ensure the fan is turned off and unplugged from the power source to prevent accidents.
- Ensure the fan blades have completely stopped to prevent injury.

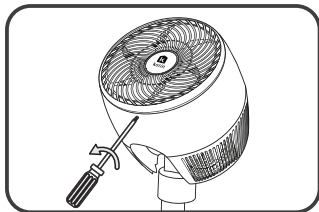
Materials Needed:

- 1 Phillips Screwdriver
- Clean Soft Cloth
- Water or Neutral Detergent

Cleaning Instruction (Step-by-Step Guide):

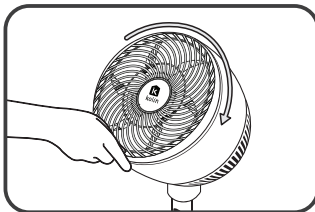
1. Remove the Screw:

- Using the Phillips screwdriver, turn the outlet housing screw counterclockwise.



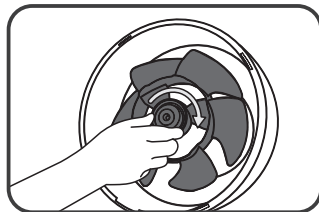
2. Remove the Outlet Housing:

- Rotate the outlet housing clockwise and carefully remove it.



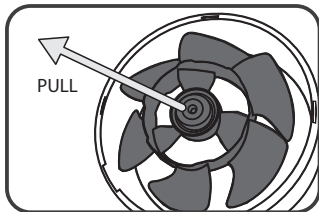
3. Release the Blade Lock:

- To disassemble the blade, rotate the blade lock clockwise.



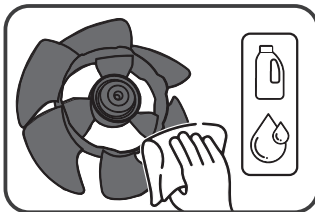
4. Remove the Blade:

- Gently pull the blade forward to remove it.



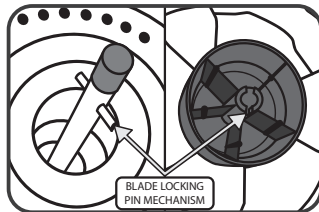
5. Clean the Components:

- Use a well-wrung soft cloth with water or a neutral detergent to wipe off dirt and dust. After cleaning, thoroughly dry the fan with a clean cloth.



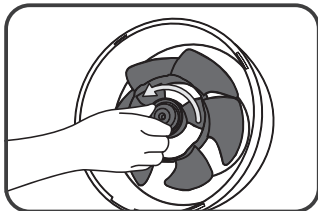
6. Reassemble the Blade:

- Ensure that the blade is properly aligned with the motor shaft and that the locking pin mechanism engages, then gently push the blade back.



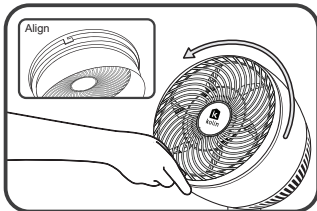
7. Secure the Blade:

- Secure the blade by rotating the blade lock counterclockwise and tighten it firmly.



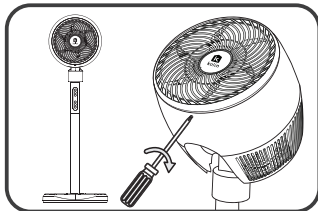
8. Position the Housing Outlet:

- Correctly position the outlet housing over the blade, aligning the screw holes and locking grooves. Rotate the housing counterclockwise to secure it.



9. Secure the Outlet Housing with the Screw:

- Use the Phillips screwdriver to tighten the outlet housing screw clockwise.



Regular Cleaning:

- To maintain optimal performance, clean the fan regularly. The frequency of cleaning depends on the environment, but the safety grilles should be cleaned at least once a month.



Environmental Protection: This symbol indicates that the product must not be disposed of with household waste. It should be delivered to a suitable recycling facility. Proper disposal and recycling help protect natural resources, human health, and the environment.

! CAUTION:

- Do not use volatile solvents like gasoline, thinner, benzene, wax, kerosene, alcohol, polishing powder, or alkaline detergents, as these may discolor or damage the fan, leading to potential injury.
- If using a chemical dust cloth, follow the specific instructions provided with the product.
- Avoid applying oil to plastic parts, as this may cause discoloration, damage, or injury.

Storage:

- Store all parts in the original packaging and keep them in a dry place.

! CAUTION:

- Before storing, clean the fan and grilles according to the instructions provided in the "How to Clean" section.

VIII. TROUBLESHOOTING

If you experience issues with your Kolin Air circulator, use the table below to diagnose and resolve common problems.

Problem	Possible Cause	Solution
Air circulator does not turn on	Power cord not plugged in	Ensure the power cord is securely plugged into a functioning outlet.
	Faulty power outlet	Test the outlet with another device or try using a different outlet.
	Tripped circuit breaker or blown fuse	Reset the circuit breaker or replace the fuse.
	Loose connection	Check all connections to ensure they are secure.
Weak or no airflow	Obstruction in front of fan	Remove any obstructions from the air inlet or outlet.
	Dust buildup on fan blades or grille	Clean the blades and grille to ensure proper airflow.
	Fan speed set too low	Increase the fan speed using the control settings.
Excessive noise or vibration	Loose screws or parts	Tighten all screws and check for loose components.
	Fan not placed on a stable surface	Place the air circulator on a flat, stable surface.
	Fan blades are imbalanced	Ensure fan blades are properly aligned and secure.
Fan is oscillating improperly	Oscillation switch is off	Ensure the oscillation switch is turned on.
	Obstruction preventing oscillation	Remove any objects blocking the fan's movement.
	Faulty oscillation mechanism	Contact customer support for repair or replacement.
Fan overheats	Running for extended periods of time	Turn off the fan and allow it to cool down before restarting.
	Dust or debris in motor	Clean the motor area to improve airflow and cooling.
Fan stops working unexpectedly	Power outage	Check for power issues in your area.
	Overload protection activated	Let the fan cool down and reset, then try turning it on again.
	Internal component failure	Contact customer support for further assistance.

Note: If you are unable to resolve an issue using this guide, please contact Kolin customer support for further assistance. Do not attempt to disassemble or repair the fan yourself, as this may void the warranty and cause further damage.

The design and specifications are subject to change without prior notice for product improvement. Any updates to the manual will be uploaded to the service website, please check for the latest version.

If you have any concerns, please contact us at the following:

Customer hotline: **(02) 8852-6868**

Text hotline: **+63 917-881-8982**

Email: **customerservice@kolinphil.com.ph**

Also, please like and follow us on social media accounts:

Facebook: kolinphilippines

Instagram: kolinphilippines

Youtube: kolinphilippines

Tiktok: kolinphilippines

Website: www.kolinphil.com.ph

KPII032125



Kolin Phils. Int'l., Inc.

SERVICE CENTERS

BRANCH	ADDRESS	TEL. NO.
Bacolod	Door #A-2 & A-3 UTC Bldg., Alunan St., Brgy. 36, Bacolod City	(034) 466-9145
Cagayan De Oro	Door #3 De Oro Land Bldg., Julio Pacana St., Puntod, Cagayan de Oro City	(088) 557 - 7353
Cebu	Lot 758-B-1, P. Suico St. Upper Tabok, Mandaue City, Cebu	(032) 234 - 1844
Dagupan	Unit #1 107 Caranglaan District, Dagupan City, Pangasinan	(075) 529 - 0587
Davao	Blk 17 Lot 9, Calamansi St., Juna Subd., Matina, Davao City	(082) 272 - 0048
Iloilo	Door# 4,5 & 7, D' Appliance Arcade, South Fundidor, Molo, Iloilo City	(033) 337 - 5914
Pampanga	LRK Commercial Bldg., Jose Abad Ave., Lagundi, Mexico, Pampanga	(045) 455 - 2934

For More air conditioner tips, please like, share and follow us on our social media accounts:

Facebook : [kolinphilippines](#)
Instagram : [kolinphilippines](#)
Youtube : [kolinphilippines](#)
Tiktok : [kolinphilippines](#)
Website : www.kolinphil.com.ph

OFFICE

Kolin Bldg. 1854 Sta. Rita St.,
Guadalupe Nuevo, Makati City, 1212
Service Hotline: (632) 8852 - 6868

PLANT

Blk 3 Lot 5, Main Drive First Cavite
Industrial Estate, Langkaan 1,
Dasmariñas City, Cavite
Tel. No.: (046) 402-0793