



# CERTUS Ai

*Full DC Inverter Split Type Air Conditioner*

## SMART CONTROLLER MANUAL



### IMPORTANT NOTE

Please read this manual carefully before installing and connecting to the application. Make sure to save this manual for future reference.

 Kolin Philippines Int'l, Inc.

**KS-IW10-MCAI12O1M32**

**KS-IW15-MCAI12O1M32**

**KS-IW20-MCAI12O1M32**

**KS-IW25-MCAI12O1M32**

# CONTENTS

<b>SYSTEM REQUIREMENTS.....</b>	<b>2</b>
<b>PRECAUTIONS .....</b>	<b>3</b>
<b>DOWNLOAD AND INSTALLATION OF APP .....</b>	<b>4</b>
<b>USER REGISTRATION AND SIGN-IN.....</b>	<b>5</b>
• <b>Creating Account .....</b>	<b>5</b>
• <b>Signing In .....</b>	<b>6</b>
<b>NETWORK CONFIGURATION .....</b>	<b>7</b>
• <b>Via Bluetooth-Assisted Setup .....</b>	<b>8</b>
• <b>Via Manual Setup.....</b>	<b>9</b>
<b>APP INTERFACE OVERVIEW.....</b>	<b>13</b>
• <b>Home Display Page .....</b>	<b>13</b>
• <b>Device Control Interface.....</b>	<b>14</b>
• <b>Device Features and Controls.....</b>	<b>15</b>
• <b>Advance/Special Functions.....</b>	<b>17</b>
• <b>Scenes.....</b>	<b>27</b>
• <b>ME Tab (Account Settings).....</b>	<b>28</b>
<b>CAUTIONS.....</b>	<b>33</b>

## DECLARATION OF CONFORMITY

Hereby, we declare that the AC is in compliance with the essential requirements and other relevant provisions of Directive 2014/53/EU. A copy of the full DOC is attached.

# SYSTEM REQUIREMENTS

## A. Device Specifications (Wi-Fi Module Kit)

Model: EU-SK105, EU-SK106, EU-SK107, EU-SK109, EU-SK110,  
US-SK105, US-SK106, US-SK107, US-SK109, US-SK110.

Standard: IEEE 802. 11b/g/n

Antenna Type: Printed PCB Antenna

Frequency: WLAN 2400~2483.5 MHz

Operation Temperature: 0°C~45°C/32°F~113°F

Operation Humidity: 10%~85%

Power Input: DC 5V/500mA

Maximum Transmitted Power: <20dBm

## B. Wi-Fi Requirements

### • Wi-Fi Frequency

- ✓ Only 2.4 GHz networks are supported.
- ⊘ 5 GHz networks are not supported.

### • Security Type

- ✓ Supports WPA-PSK, WPA2-PSK, WPA3-SAE, or no encryption.  
*Recommended: Use WPA2 or WPA3 for best security.*

### • Signal Strength

- ✓ A strong and stable signal near the air conditioner is required.

## C. Smartphone Requirements

### • Operating System

- ✓ Android 5.0 or later
- ✓ iOS 13.0 or later

### • Other Requirements

- ✓ Your phone should have camera access (for QR code scan).
- ✓ Stable internet connection
- ✓ Sufficient storage space to install and update the app.

**NOTE: Make sure the NetHome Plus app is updated to the latest version to ensure compatibility and feature availability.**



# PRECAUTIONS

## GENERAL SAFETY

- Only operate the air conditioner and smart controller as described in this manual.
- Do not disassemble, modify, or tamper with the smart controller or AC unit.
- Keep the controller and connected devices away from water, moisture, or heat sources.
- If the unit or smart kit appears damaged or faulty, stop using it immediately and contact Kolin Service Hotline or its Authorized Service Partners.

## CONNECTIVITY

- The NetHome Plus app only supports 2.4 GHz Wi-Fi networks. Do not use 5 GHz Wi-Fi.
- Ensure your Wi-Fi signal is strong where the AC unit is installed.
- Using public Wi-Fi is not recommended due to potential security risks.
- If the app frequently disconnects, check for internet instability or signal interference.

## DEVICE USAGE

- Do not share your account credentials with untrusted users.
- Avoid changing AC settings from multiple devices at the same time to prevent command conflicts.
- Changes made in the app may not be reflected on the physical remote control.

## DURING SETUP

- Allow all necessary app permissions, especially for location, camera, and Bluetooth.
- Ensure your smartphone's Bluetooth and location services are turned on if using Bluetooth setup.
- Only proceed with configuration when the AC is in pairing mode (AP) and the LED indicator is showing "AP."

## SYNC DELAYS

- In weak network conditions, app commands may take time to reach the AC.
- If status doesn't update right away, try refreshing the app or restarting the AC.

# DOWNLOAD AND INSTALLATION OF APP

**NOTE: Ensure your device have...**

- ✓ Available storage space
- ✓ Strong and stable Wi-Fi network or has an active mobile data connection.



Depending on your phone's operating system, you can download the **NetHome Plus** app through the following methods:



## **FOR ANDROID PHONE USERS:**

Open the **GOOGLE PLAY STORE** on your device, type "**NetHome Plus**" in the search bar, then select the app from the results and tap "**install**" to download it.



## **FOR IOS PHONE USERS:**

Open the **APP STORE** on your device, type "**NetHome Plus**" in the search bar, then select the app from the results and tap "**install**" to download it.

**OR**

Scan these QR codes,  
and tap "Install" to  
download it.



**Google Play Store**  
(Android Phone)



**App Store**  
(iOS Phone)

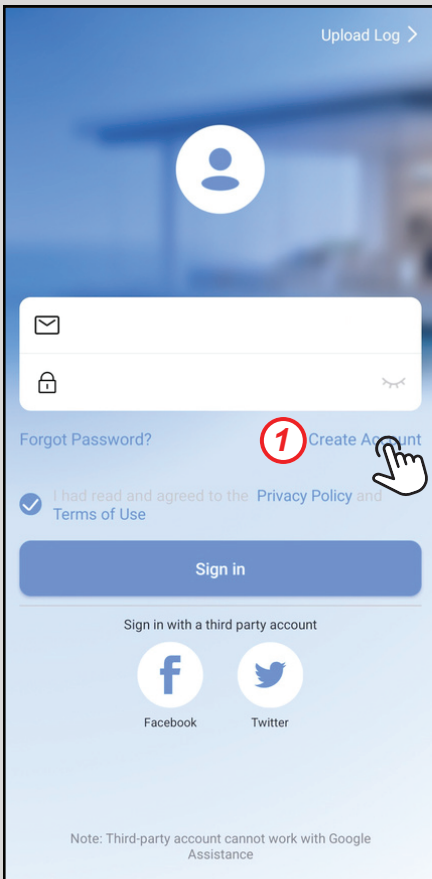
# USER REGISTRATION AND SIGN-IN

**NOTE: Ensure your device have...**

- ✓ Strong and stable Wi-Fi network or has an active mobile data connection.

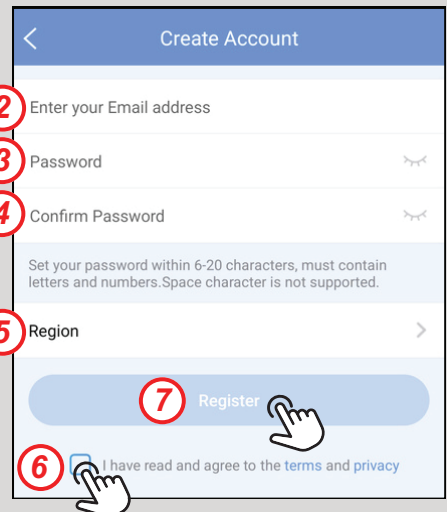
- After installing the app, open it.
- You'll see a 'Welcome to NetHome Plus' screen with a short overview of its features. You can skip this or swipe through to learn more.
- Next, you'll see the Terms and Conditions. Make sure to read the Privacy Policy, Terms of Use, and Permissions. Tap 'Agree' to continue using the app.

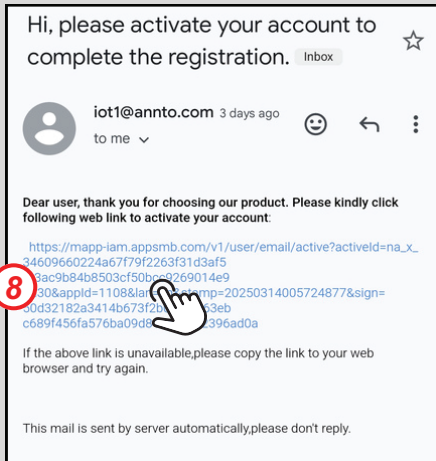
## CREATING ACCOUNT



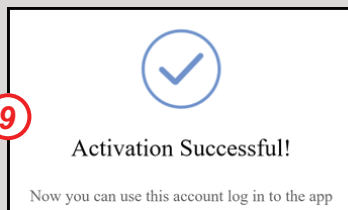
To create "NetHome Plus" Account, follow this steps:

- ① Click "Create Account".
- ② Enter your email address.
- ③ Set a password.
- ④ Re-type your password.
- ⑤ Select your region (e.g., Philippines).
- ⑥ Check the box "I have read and agree to the terms and privacy."
- ⑦ Click "Register."



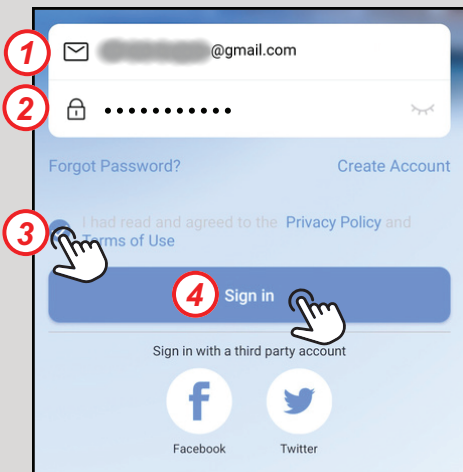


- ⑧ You will receive an activation link via email. Open your email and click the link to activate your account.
- ⑨ Once activated, you will see a confirmation message: "Activation Successful!"
- ⑩ Return to the NetHome Plus app and click "OK."



After creating an account, sign-in first to access the app.

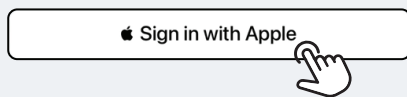
## SIGNING IN



*You can also sign in using your Facebook and Twitter account, just click the icons to sign-in.*

- ① Enter your registered email address.
- ② Enter your password
- ③ Click the "I have read and agreed to the Privacy Policy and Terms of Use".
- ④ Then click "Sign In".

*For iOS users, you can sign in using your Apple account. Tap the option and follow the instructions displayed on your phone to complete the sign-in.*



After Signing In, click "Agree" on Terms and Privacy. It will display a quick overview of the Home Display Page, click "OK" to continue or click "X" to skip.

# NETWORK CONFIGURATION

## NOTE: *Make sure...*

- ✓ Air conditioner is plugged in and powered ON.
- ✓ Wi-Fi module is properly installed.
- ✓ Smartphone is connected to a 2.4 GHz Wi-Fi network.
- ✓ Wi-Fi signal is strong near your AC.
- ✓ All necessary permissions are allowed (**bluetooth, location**)

From the NetHome Plus home screen, connect the app to the AC unit.

## CONNECTING APP TO AC Device

There are two ways to connect the app to AC Device:

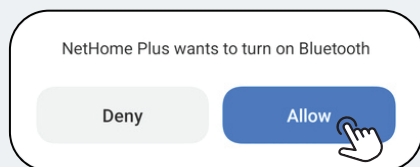
- A** via Bluetooth-assisted Setup      **B** via Manual Setup

### **A** CONNECTING THE NETHOME PLUS TO THE AIRCONDITIONER VIA BLUETOOTH-ASSISTED SETUP

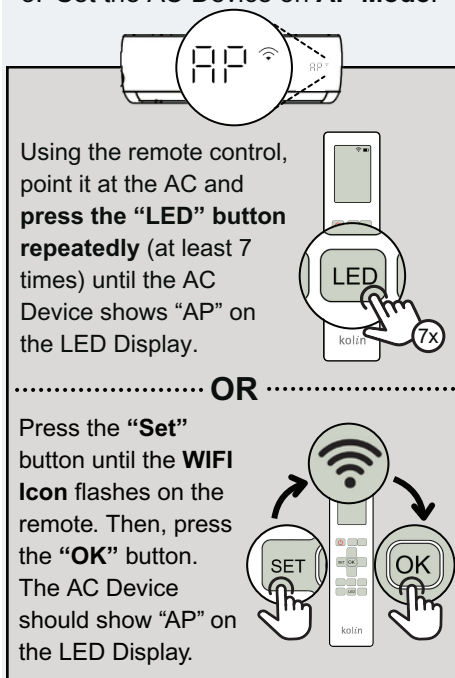
1. From Home Display Page, tap on “Add Device”.



2. If asked, tap “Allow” to enable Bluetooth and continue setup.



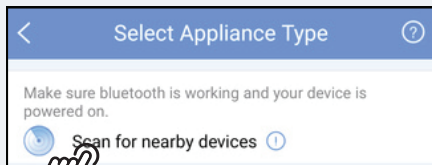
3. Set the AC Device on **AP Mode**.



# A

## CONNECTING THE NETHOME PLUS TO THE AIRCONDITIONER VIA BLUETOOTH-ASSISTED SETUP

3. Tap "Scan for nearby devices".

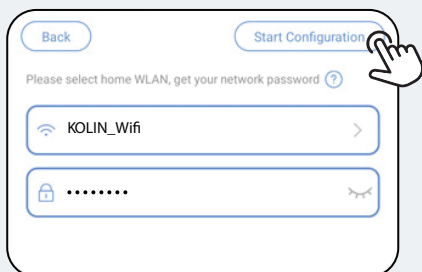


*When Bluetooth is on and your AC is already in AP Mode, the app may automatically detect nearby devices.*

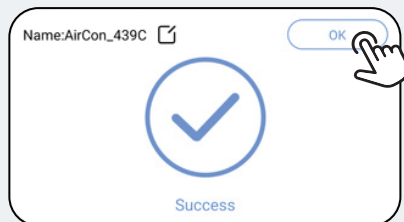
4. Tap the AC device found to begin pairing.



5. Enter your Wi-Fi name and password and then tap "Start Configuration".

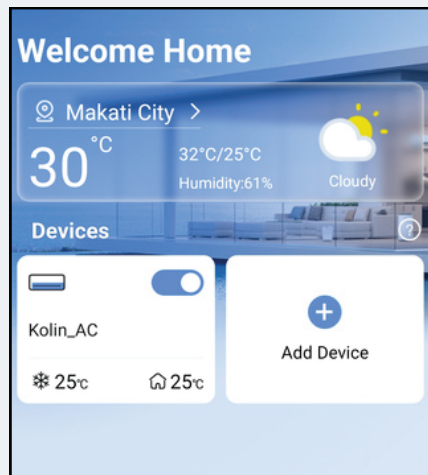


6. Wait while the configuration process loads. It will display "Success" when complete, then tap OK.



*You can set the name of your AC device by tapping this icon*

7. If the configuration is successful, your device will be added to the list.



*After connecting APP to the AC Device, proceed to page 13 to see **How to Use the App.***

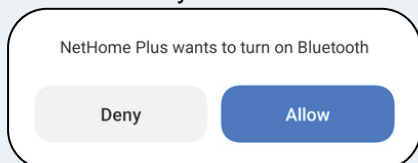
# B

## CONNECTING THE NETHOME PLUS TO THE AIRCONDITIONER VIA MANUAL SETUP

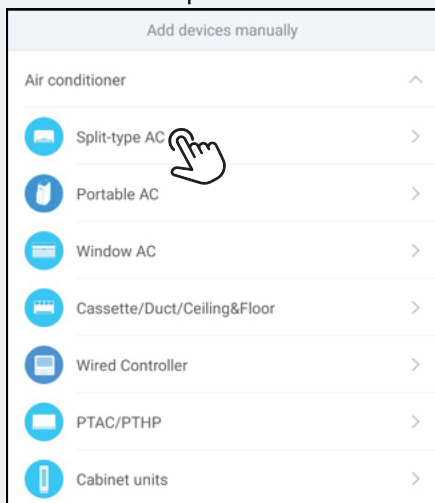
1. Tap "Add device" to start.



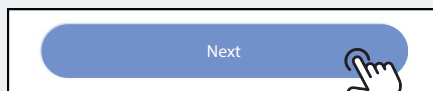
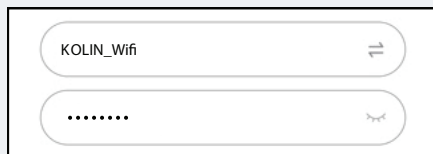
2. In manual setup, Bluetooth is optional — you may choose to allow or deny it.



3. Tap "Split-type AC" to start the Manual setup.

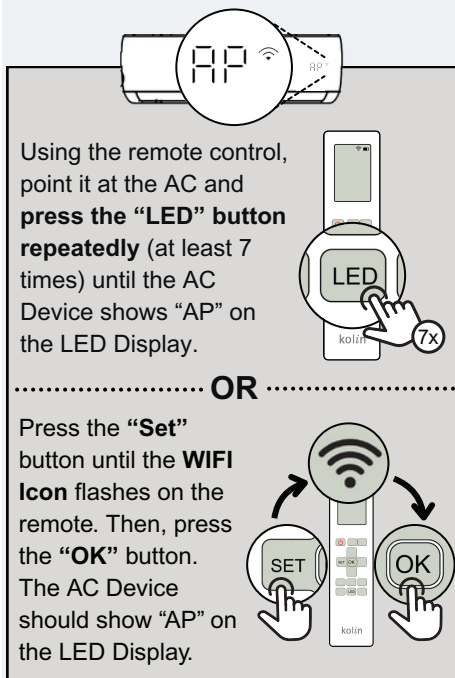


4. Connect to your home Wi-Fi network by entering the name and password, then click "Next."



*When selecting Home Wi-Fi, make sure to use 2.4 GHz network. NetHome plus does not support 5 GHz Wi-Fi.*

5. Set the AC Device on **AP Mode**.



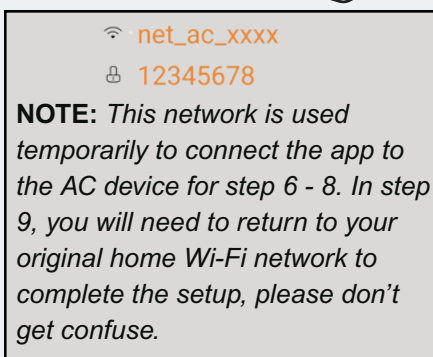
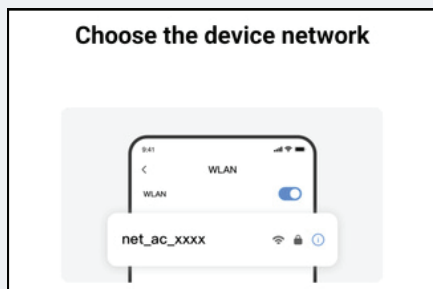
# B

## CONNECTING THE NETHOME PLUS TO THE AIRCONDITIONER VIA MANUAL SETUP

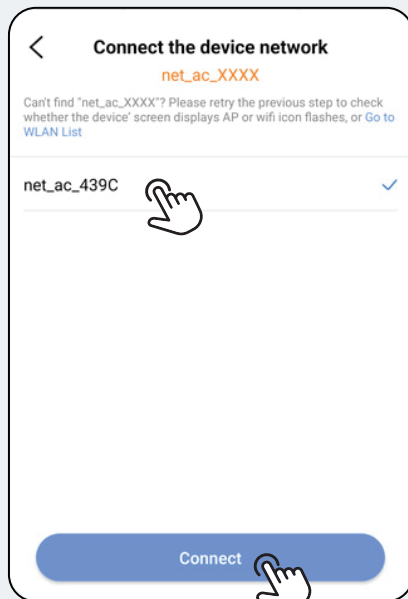
6. After setting AP Mode, select 'I have completed the steps above' in the NetHome Plus app, and then proceed by tapping "Next".



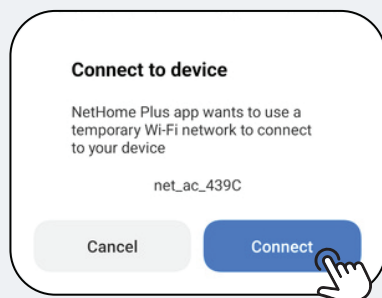
7. Then, choose the device network: Click "Go to WLAN List".



8. Select the network labeled "net\_ac\_xxxx" and click "Connect".



9. Tap "Connect" to temporarily connect to that network.





# B

## CONNECTING THE NETHOME PLUS TO THE AIRCONDITIONER VIA MANUAL SETUP

10. A prompt will appear, asking you to connect to the Wi-Fi network and open the wireless network settings.

Please connect to the family  
WLAN(KOLIN\_Wifi)

[Go to Wireless Network Settings](#)

**NOTE:** At this step, you need to reconnect your smartphone to the Wi-Fi network.

11. The app will begin connecting to the device. This process may take a while.

### Connecting



Appliance WLAN: **Done**

Preconfigure appliances: **Done**

Appliances join the home WLAN: 12%

Please **do not leave** this page until the network is successfully connected.

[Cancel](#)

12. After setup, a 'Successfully Connected' message will appear.

**NOTE:** You can then rename your device using the suggested or a custom name.

Then, click "Save"



Successfully Connected

Recommended Device Name:

Living Room

Dining Room

Kitchen

Master Bedroom

Children Bedroom

Study

Guest Bedroom

Storage Room

Custom Device Name:

Kolin\_AC

Save

# B

## CONNECTING THE NETHOME PLUS TO THE AIRCONDITIONER VIA MANUAL SETUP

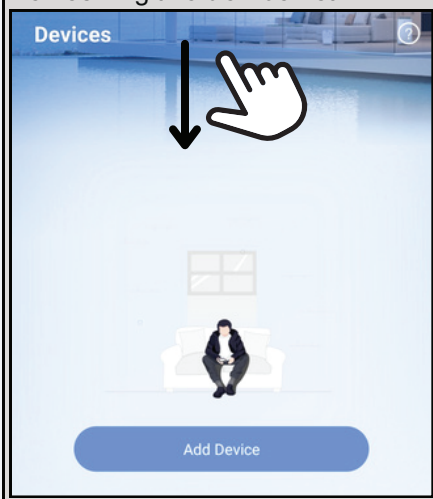
13. After saving, your AC Device should appear on the NetHome plus Home Display Page.



**NOTE:** Sometimes the device may not show in Home Display Page or may show 'Offline' after setup because of internet differences. If that happens:

- Refresh the device list by pulling down the screen.
- Restart the AC and wait a few minutes.
- If it still doesn't work, check your internet and try again.

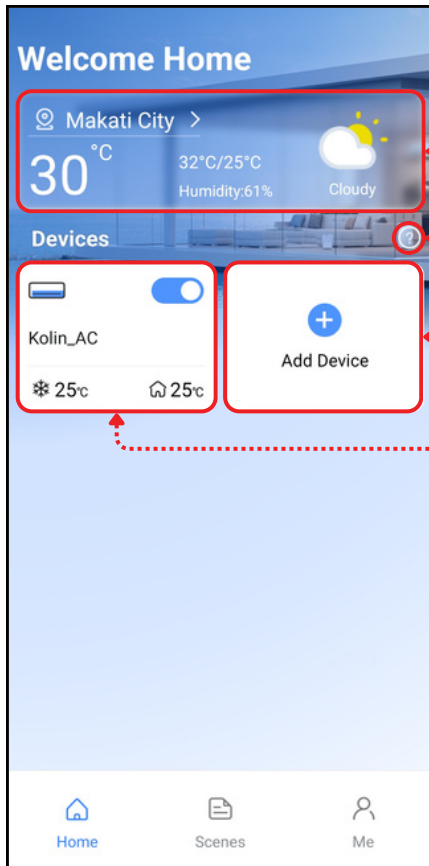
Refreshing the device list



# HOW TO USE THE APP



## Home Display Page



### Real-Time Weather Conditions

- Shows current city, temperature, humidity, and weather status.

### FAQs (Frequently Asked Questions)


- Tap the question mark icon to access quick help or answers.


### Add Device


- Tap the "+" button to pair a new smart device.

### CONNECTED DEVICE

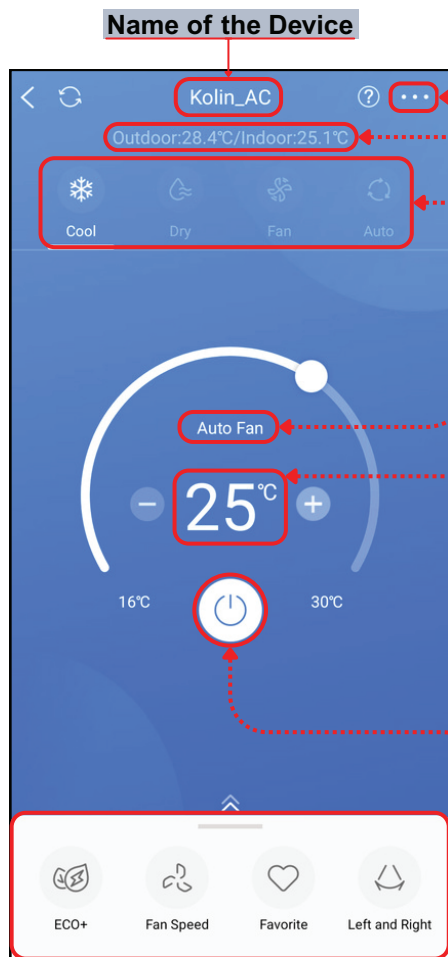
- Tap on this device to open the Device Control interface

 Toggle this to turn on or turn off the AC device from the Home Page

 25°C This shows the mode and set temperature of the AC Device

 25°C This shows the room temperature.

## Device Control Interface



### ADVANCE/SPECIAL FUNCTIONS

⋮ Tap this to see more features and functions.

### Outdoor Temp/Indoor Temp

### MODES

❄️ Cool 🌿 Dry 🌀 Fan 🔄 Auto

### Fan Speed

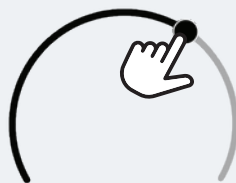
### Set Temperature

#### Temperature Control

⊕ Tap this to increase temp

⊖ Tap this to lower temp

*You may also drag the solid circle along the arc to control temperature*



**Temperature Limits: 16°C - 30°C**

### Power Button

🔌 Tap to turn ON/OFF the AC Device

### Feature Panel

- Here you'll find control features and operational functions of the AC device.



*Scroll up this icon to see the feature panel*



*Then scroll the panel to the left to see more features*

### Top Navigation Icons

	<b>Back Button</b> <ul style="list-style-type: none"> <li>Tap to go back to Home Display Page</li> </ul>
	<b>Refresh Button</b> <ul style="list-style-type: none"> <li>Tap to refresh the page.</li> </ul>
	<b>User Help Guide</b> <ul style="list-style-type: none"> <li>Tap to see instruction guides, tips and frequently asked questions</li> </ul>

## MODES



### Cool Mode

- Blows cold air to lower the room temperature based on your set level.



### Fan Mode

- Circulates the air in the room without using the cooling function.



### Dry Mode

- Reduces excess humidity by removing moisture from the air without significant cooling.


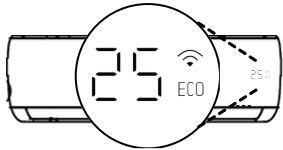

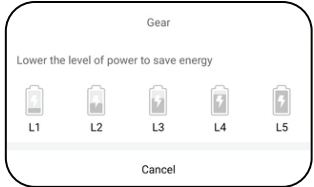

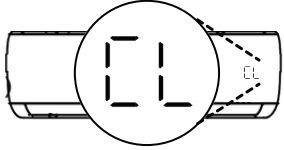




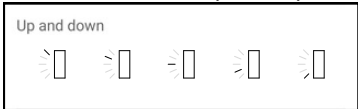





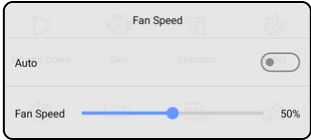


### Auto Mode




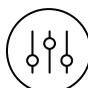

- Automatically adjusts cooling and fan settings depending on the room's current temperature.




## DEVICE FEATURES AND CONTROLS

ICONS	DESCRIPTIONS
	<p><b>ECO+ (AI)</b> <i>*Applicable in Cool Mode only</i></p> <ul style="list-style-type: none"> <li>Simply tap the icon to <b>enable the AI Energy Saving Mode</b>.</li> <li>This feature uses intelligent algorithms to optimize comfort while minimizing energy consumption.</li> <li>When activated, <i>the icon will turn blue</i>, and "ECO" will appear on the air conditioner's LED display.</li> </ul> 
	<p><b>Gen</b> <i>*Applicable in Cool Mode only</i></p> <ul style="list-style-type: none"> <li>Lets you control the power level of the air conditioner. You can choose between Level 1 (lowest) to Level 5 (highest) depending on your preferred energy use or power source capacity.</li> <li>Simply tap the level icon – once chosen, the icon will change color.</li> </ul> 
	<p><b>Self Clean / Auto Clean</b></p> <ul style="list-style-type: none"> <li>Keeps your AC clean and running well by cleaning the inside automatically.</li> <li>Tap the Active Clean icon in the app. <i>The icon turns blue</i> and the AC will shut off during cleaning. The AC display will show "CL" while cleaning.</li> <li><b>Cleaning Time:</b> Takes about approximately 42 minutes. After cleaning, the AC will automatically turn off and return to normal.</li> </ul> 

ICONS	DESCRIPTIONS
	<p><b>LED</b></p> <ul style="list-style-type: none"> <li>Turns the AC's display light on or off based on your preference.</li> <li>Tap the icon to activate. <i>The icon will turn blue when activated.</i></li> </ul>
	<p><b>Direction</b></p> <ul style="list-style-type: none"> <li>It lets you control where the air flows from the air conditioner.</li> </ul> <div style="display: flex; justify-content: space-around; align-items: flex-start;"> <div style="text-align: center;"> <p>Choose an angle</p> <p><b>UP and DOWN (Vertical)</b></p>  </div> <div style="text-align: center;"> <p>Choose an angle</p> <p><b>LEFT and RIGHT (Horizontal)</b></p>  </div> </div>
	<p><b>Up and Down</b></p> <ul style="list-style-type: none"> <li>This control feature enables the louvers to automatically swing <b>up and down</b>.</li> <li>Tap the icon to activate. <i>The icon will turn blue when activated.</i></li> </ul>
	<p><b>Left and Right</b></p> <ul style="list-style-type: none"> <li>This control feature enables the louvers to automatically swing <b>left and right</b>.</li> <li>Tap the icon to activate. <i>The icon will turn blue when activated.</i></li> </ul>
	<p><b>Breeze Away</b> <span style="float: right;">*Not applicable for Auto Mode</span></p> <ul style="list-style-type: none"> <li>This feature moves the airflow away from you for a more comfortable, indirect cooling.</li> <li>Tap the icon to activate. <i>The icon will turn blue when activated.</i></li> </ul>
	<p><b>Fan Speed</b> <span style="float: right;">*Not applicable for Dry Mode</span></p> <ul style="list-style-type: none"> <li>Adjust how strong the air blows by dragging the slider from 1% to 100%.</li> <li>You can also turn on Auto Mode, and the app will adjust the fan speed based on the room's temperature.</li> </ul> 
	<p><b>Boost</b> <span style="float: right;">*Applicable in <b>Cool Mode</b> only</span></p> <ul style="list-style-type: none"> <li>This feature rapidly cools the room using maximum power for immediate comfort. Delivers stronger performance than the highest fan speed.</li> <li>Tap the icon to activate. <i>The icon will turn blue when activated.</i></li> </ul>
	<p><b>Schedule</b></p> <ul style="list-style-type: none"> <li>This feature lets you set specific times for your air conditioner to turn on or off automatically.</li> <li>Tap this icon to set schedule.</li> </ul>

ICONS	DESCRIPTIONS	
	<b>Favorite</b> <ul style="list-style-type: none"><li>This feature lets you save your preferred air conditioner settings—such as mode, temperature, and fan speed.</li><li>Tap the icon to activate. <i>The icon will turn blue when activated.</i></li></ul>	 <b>QUICK ACCESS ICONS</b>  <i>Set at Advance/Special Functions</i>
	<b>Sleep Curve</b> <i>*Applicable in <b>Cool Mode</b> and <b>Auto Mode</b> only</i> <ul style="list-style-type: none"><li>This feature slowly changes the temperature and fan speed while you sleep to keep you comfortable and save energy.</li><li>Tap the icon to activate. <i>The icon will turn blue when activated.</i></li></ul>	
	<b>Range Control</b> <ul style="list-style-type: none"><li>This feature lets you set a minimum and maximum temperature limit for your AC to save energy and keep settings within a comfortable range.</li><li>Tap the icon to activate. <i>The icon will turn blue when activated.</i></li></ul>	
	<b>Humidity</b> <ul style="list-style-type: none"><li>This feature helps keep the air in your room balanced—not too dry or too humid—while still keeping it cool.</li></ul> <p><b>(THIS FEATURE IS NOT AVAILABLE ON THIS MODEL)</b></p>	

**NOTE:** *Quick Access Icons* such as **Favorite**, **Sleep Curve**, and **Range Control** need to be set on the **Advance/Special Function** section. Tap the “” icon on the **Device Control Interface** page to see settings.


## ADVANCE/SPECIAL FUNCTIONS

Favorite Setting

Cool 25°C Auto >

**TO SET FAVORITE SETTING**

- Scroll up and down to choose Mode, Temperature, and Fan
- Click “OK” to save the setting condition.



To activate, tap the “Favorite” icon on the feature panel.

Setting		
Mode	Temperature	Fan
Dry	23°C	
Auto	24°C	
1 Cool	25°C	Auto
Heat	26°C	Low
Fan	27°C	Med
Cancel		2 OK

## Schedules

### TO SET SCHEDULE

**1 Choose schedule command**

**2 Set time based on the schedule command**

Scroll up  
and down

**3 Repeat Option**

☒ Yes ☐ No

If yes, choose repeat days

**4 Choose setting and click confirm**

Setting

Mode

Cool Dry Fan Auto

Temperature | 25°C

16°C 20°C 25°C 30°C

Fan Speed | Auto

Auto 1% 20% 40% 60% 80% 100%

Feature

Sleep Curve

Confirm

**5 Set schedule name**

Schedule Name

KolinAC\_Daytime 15/15

Cancel Confirm

Add Schedule

On and Off Turn On Turn Off

06 58 03 58  
07 59 04 59 AM  
08 00 AM 05 00 PM  
09 01 PM 06 01  
10 02 07 02

Turn on time Turn off time

Repeat

Weekdays Every Day Custom

Schedule will run Monday-Friday

Setting Cool 25°C Auto

Label Kolin\_AC

Save

**6 Click "Save" to save the schedule**

**7 Set the toggle switch, to ON or OFF the schedule set.**

08:00 AM - 05:00 PM KolinAC\_D...

S M T W T F S Cool 25°C Auto



## Sleep Curve



Activate



Deactivate

The Sleep Curve function offers two primary modes:

- Auto Sleep
- Custom Sleep

### TO SET AUTO SLEEP

- 1 Choose the auto sleep by tapping on the circle. Then, tap on "Go to Check" to set.

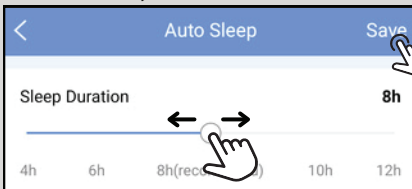
#### Auto Sleep

Automatically adjust setpoint temperature and fan speed based on outdoor temperature and your usage habits.

[Go to Check >](#)



- 2 Choose on sleep duration by dragging the solid circle along the line, and click "Save".



### TO SET CUSTOM SLEEP

- 1 Choose the custom sleep by tapping on the circle. Then, tap on "Go to Set" to set.

#### Custom Sleep | 21-25°C

Adjust setpoint temperature and fan speed based on your custom settings.

[Go to Set >](#)

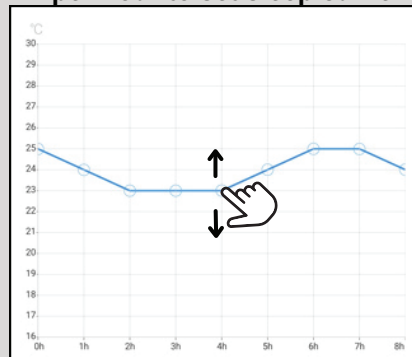


- 2 Choose on sleep duration by dragging the solid circle along the line.

#### Sleep Duration



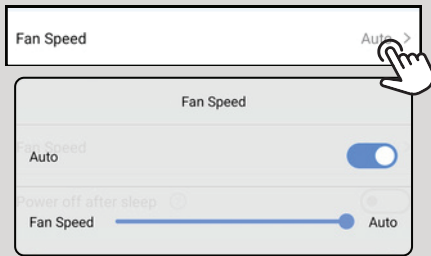
- 3 Drag up and down the temp per hour to set sleep curve.



**NOTE:** You may also tap "Change to AI Curve" to apply a smart curve that adjusts based on your habits, ambient temperature, and climate conditions.

**DISCLAIMER:** The AI Curve becomes available only after consistent use of this feature. It may not appear or function accurately during initial access.

#### 4 Choose fan speed



#### 5 Choose the AC status (ON/OFF) after the sleep curve completes.



#### 6 Click "Save".



To activate, you can tap the toggle icon or tap the "Sleep Curve" icon on the feature panel.

#### Range Control

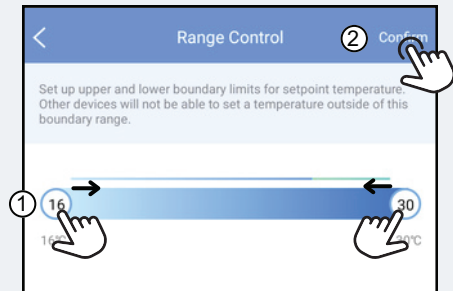


☒ Activate ☐ Deactivate

#### TO SET RANGE CONTROL

1 Drag the limits to a desired range

2 Click "Confirm" to save the settings



To activate, you can tap the toggle icon or tap the "Favorite" icon on the feature panel.

**NOTE:** The limit for minimum temperature setting is 16°C to 28°C only, the limit for maximum temperature setting is 24°C to 30°C only.

#### Temperature Range Control Function:

When a user sets a temperature range through the app, it becomes the limit for all users. No one can set the temperature outside this range, whether using the app or the remote control.

Any connected user can update the range within the app. The limit stays active even without an internet connection and can only be changed using the NetHome Plus app.

Geolocation

On

- **Geolocation** allows you to control your air conditioning unit automatically based on your proximity to a specified location.

**NOTE:** Location permission must be turned on for Geolocation to function.

## TO SET GEOLOCATION

### 1 Turn on the toggle switch

☒ Activate ☐ Deactivate

### 2 Set the location of the AC device

### 3 Set the distance range and click "OK" to save

Range

8	
9	Miles
10	Kilometers
11	
12	
13	

Cancel OK

### 4 Turn on the setting's toggle switches

When you leave the specified range ☒

When you enter the specified range ☒

### 5 Choose command and click "OK" to save

Power

On
Off

Cancel OK

Geolocation

1 Geolocation ☒

Notice: For the Geolocation function to operate, this app must remain running in the background. If the app has been closed in the background, the geolocation feature will not operate correctly.

Location

2 H26R+7V8, Makati, Metro Manila, Philipp...

3 Range 10 Kilometers

Setting

4 When you leave the specified range ☒

5 Power Off

4 When you enter the specified range ☒

5 Power On

6 Setting Cool 25°C Auto

### 6 Choose settings and click "OK" to save

Setting

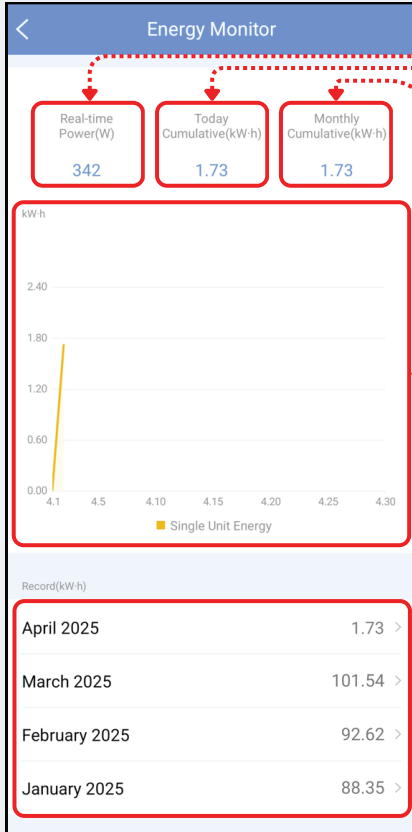
Mode	Temperature	Fan
Dry	23°C	
Auto	24°C	
Cool	25°C	Auto
Heat	26°C	Low
Fan	27°C	Med

Cancel OK

**NOTE:** NetHome plus app must remain running in the background for Geolocation to function.

## Energy Monitor

- The **Energy Monitor** feature allows users to track their air conditioner's energy consumption. This feature provides real-time monitoring and accumulates data on a daily and monthly basis.



### Real-time power

- Displays current power usage in watts (W).

### Today's Cumulative Energy

- Shows the total power consumption for the day in kilowatt-hours (kWh).

### Monthly Cumulative Energy

- Displays the accumulated energy usage for the current month.

### Energy Consumption Graph:

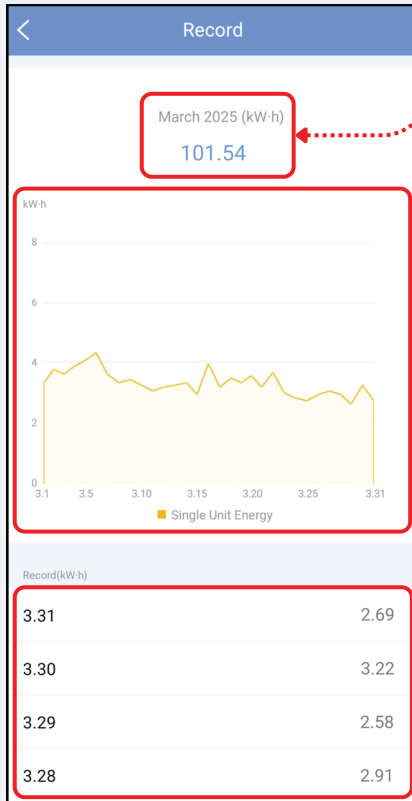
- The left side of the graph represents power usage in kWh.
- The bottom displays the days of the month.

### Energy Monitoring History

- Recorded monthly energy consumption.
- Tap on this to see the recorded monthly energy consumption of that month.

March 2025

101.54



### Cumulative Energy Consumption of the Month

### Energy Consumption Graph of the Month

### Cumulative Energy Consumption per Day of the Month

3.28

March 28

2.91

2.91 kWh

### Electric Bill Estimation

**Total energy consumption (kWh)**

**x**

**Electricity Rate (per kWh)**

#### For Example:

- Your estimated total accumulated power consumption is **101.54 kWh**.
- The electric-provider's rate is **Php11.7428 per kWh**.

101.54 kWh

x

Php 11.7428 per kWh

= **Php 1192.36**

Therefore, your estimated bill for that month from air conditioner is approximately **Php 1192.36**.



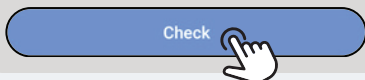
Please note that the displayed values are for illustrative purposes only. For accurate billing calculations, consult your personal energy consumption records and your electricity provider's current monthly rates.

## Check

- The **"Check"** function is a self-diagnostic tool that allows you to assess your air conditioner's operational status and identify malfunctions.

### HOW TO PERFORM MALFUNCTION CHECK

#### 1 Tap the "Check" button

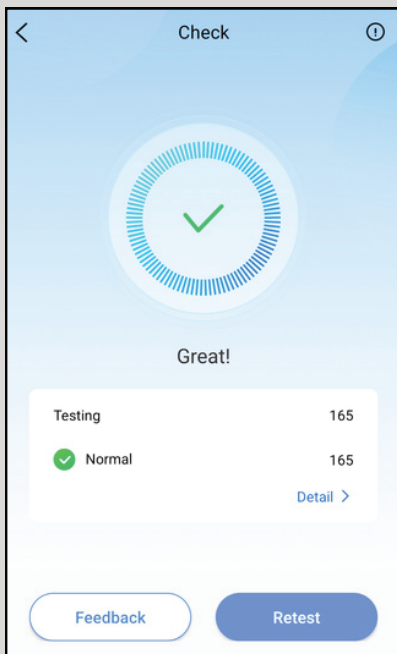


#### 2 The app will perform a scan of AC Device.

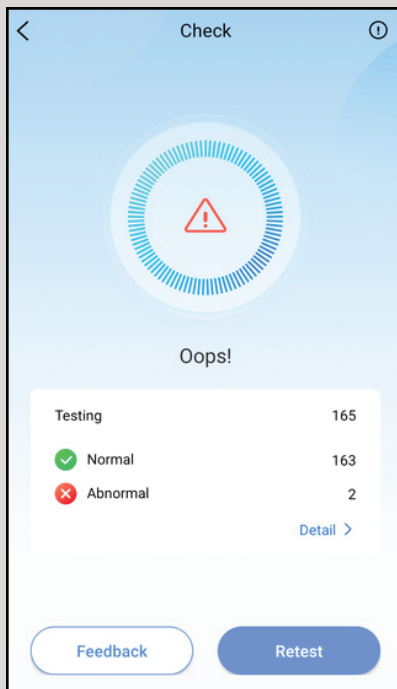


#### 3 After the scan, the results should display one of the following:

##### NORMAL RESULTS



##### ABNORMALITY DETECTED



**4** Tap on “Detail” to see list of Normal and Abnormal conditions of the AC Device

Testing	165
✓ Normal	163
✗ Abnormal	2
<a href="#">Detail &gt;</a>	

Detail	
✗ Abnormal	2
Indoor T2 temperature sensor failure	
Indoor T1 temperature sensor failure	
✓ Normal	163
Indoor display board and transfer board communication fault	
Outdoor compressor feedback protection	
Indoor and outdoor fan parameters are incorrect	
System pressure protection	

**NOTE:** If something is listed as abnormal, please refer to the owner's manual for guidance or contact the Kolin Service Hotline for assistance.

**!** Please note that the displayed image are for illustrative purposes only. To see if your AC is having problems, check the NetHome Plus app on your phone.

**Units**

°F

°C

- Choose the unit value that will be displayed in your App and AC Device (Fahrenheit or Celsius) by tapping °F or °C.

**Time Zone**

Asia/Manila >

- Depending on the location, you can change the time zone in here (e.g., Asia/Manila).

### About Device



- Tap here to **change the AC device name**. You can also refresh the device, view terminal codes, check the firmware version, and see the device description.

### Function Description



- It provides a quick overview of the various features available within the NetHome Plus application. Tap on it to see the features with description.

### Share Device



- Tap 'Share Device' to display the QR code used for sharing your device with another user.

*For full instruction on **HOW TO SHARE DEVICE**, please refer to page 30.*

### Delete



- Tapping this will delete your device out of the NetHome plus app, you will need to connect the APP to AC again to control the device.

#### 1 Tap “YES” to delete the device

Delete device

Are you sure you want to delete your device?

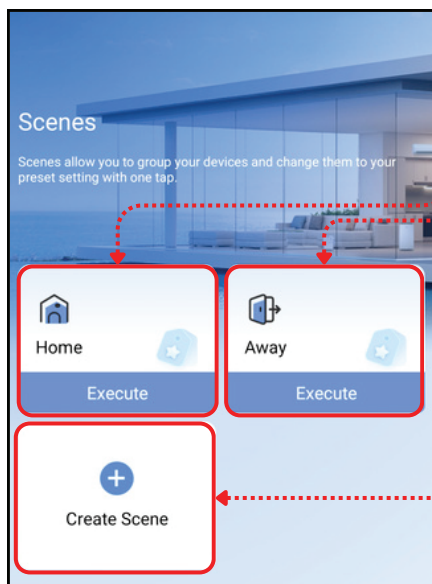
Cancel

YES





## Scenes



### Home

- Tap on “Execute” in home and click “Yes”, if you want to TURN ON all your devices at once.

### Away

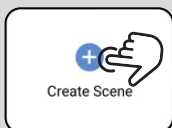
- Tap on “Execute” in away and click “Yes”, if you want to TURN OFF all your devices at once.



**Tap this icon to create a scene. Scenes let you control multiple devices with a single setting.**

## TO CREATE SCENE

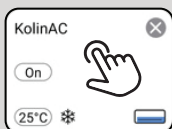
### 1 Tap “+” button



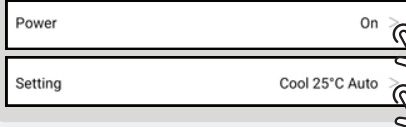
### 2 Set Scene Name

Name KolinAC\_Scene1

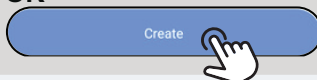
### 3 Tap on the device



### 4 Set the Device Setting



### 5 Tap on “Create” and a success prompt will show, then tap “OK”

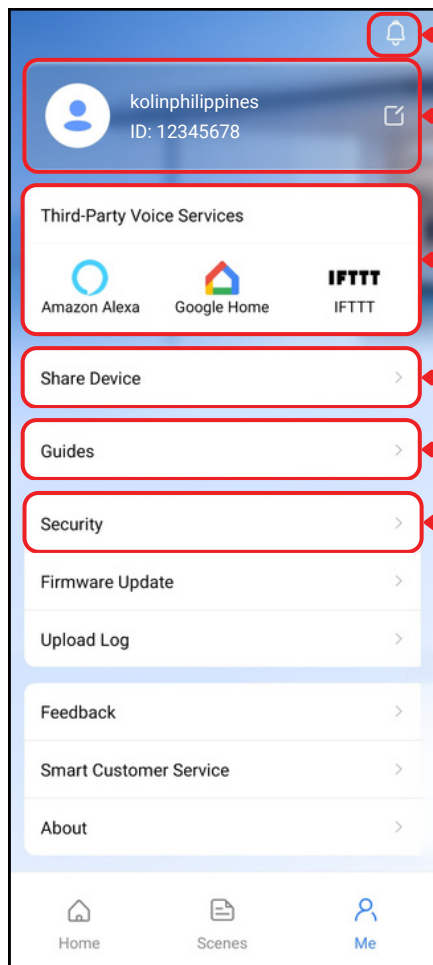


### 6 The scene will now appear on the interface.





## ME TAB



### Notifications

### Personal Information

- Change Profile Photo
- Change Account Name
- Displays Email Address, Unique ID Number and set region.
- Sign Out Account

### Third-Party Voice Service

- Connect to Amazon Alexa, Google Home and IFTTT.
- Tap for in-app instructions

### Share Device

- For instructions on **HOW TO SHARE DEVICE**, please see page 30.

### Guides

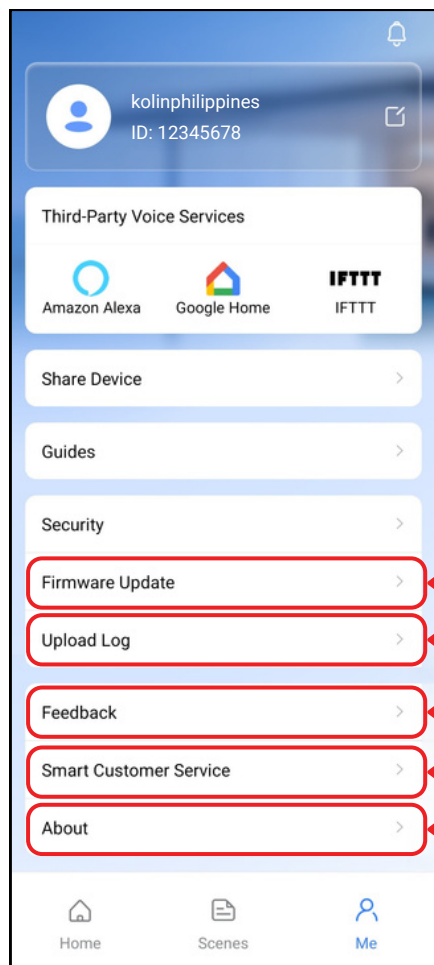
- This section offers helpful resources for using the NetHome Plus app, including how-to guides, feature overviews, updates, FAQs, tips, and more.

### Security

- Change account password
- Delete account
- Export Personal Information
- Allow Permission Settings



## ME TAB



### Firmware Update

- Tap to check for latest firmware update.

### Upload Log

- This feature sends diagnostic info to support or developers to help fix app or device issues.

### Feedback

- Share your experience, rate the app, and send comments or issues to help us improve.

### Smart Customer Service

- Find quick help for common questions and issues with the NetHome Plus app.
- Browse FAQs and tap a question to get instant answers or troubleshooting tips.
- *Note: Live chat support is not available in this feature.*

### About

- Learn more about the NetHome Plus app, view FAQs, terms of use, and privacy policy. You can also check for updates and change the app language here.



## SHARE DEVICE

- Share access to your appliance with others, like family or roommates, so they can control it through the NetHome Plus app on their own phones.

## HOW TO SHARE DEVICE

To make it easier to understand, the person sharing the device will be called the **Home Owner**, and the one receiving access will be the **Home Member**.

### Instruction for HOME OWNER

Share Device

- Tap on "Home Owner: Share QR Code" to start.
- Select the device you want to share

### Instruction for HOME MEMBER

Share Device

- Tap on "Home Member: Scan" to start.
- If camera permission is not yet allowed, a prompt will appear. Tap "Yes" to allow camera permission and proceed.

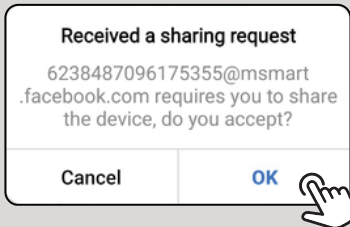
## Instruction for HOME OWNER

### 3 A QR Code will be generated

Please stay on this page until the Home Member successfully scans the QR Code.



### 4 When the QR Code is scanned, a prompt will display. Click "OK" to accept.

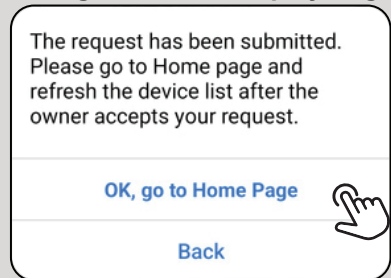


## Instruction for HOME MEMBER

### 3 Scan the QR Code from Home Owner

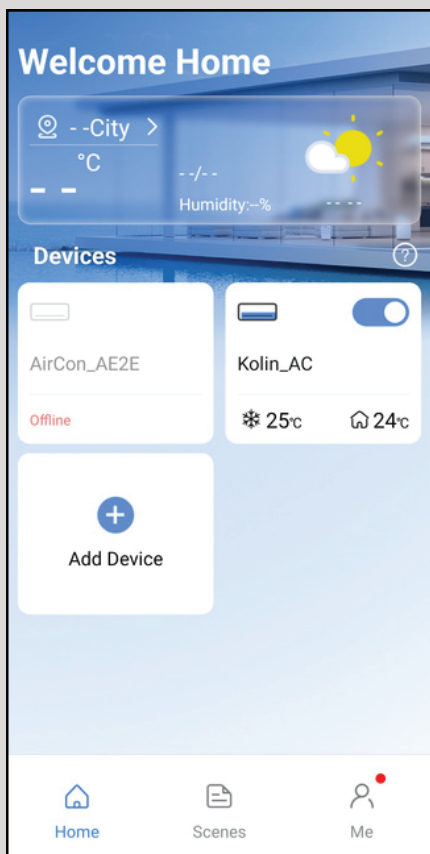


### 4 If the scanning is successful, a prompt will show up that requests has been submitted. Click "OK, go to Home Page" and go to Home Display Page.



## Instruction for HOME MEMBER

### 5 Wait for the device to appear.



**NOTE:** If the device still not appear, **refresh the page**. You can refresh it by dragging down on the Home Display.



Alternatively, you can **close the app and reopen it** — the device should now appear. If it still doesn't show up, check your connection and repeat the configuration steps.

## CAUTIONS

**Wireless module models: US-SK105, EU-SK105,  
US-SK107, EU-SK107:**

FCC 2ADQOMDNA21

ID: 12575A-MDNA21

**Wireless module models: US-SK106, EU-SK106:**

FCC 2ADQOMDNA22

ID: 12575A-MDNA22

**Wireless module models: US-SK109, EU-SK109,  
US-SK110, EU-SK110:**

FCC 2ADQOMDNA23

ID: 12575A-MDNA23

This device complies with Part 15 of the FCC rules and industry Canada's license-exempt RSS's.

Operation is subject to the following two conditions:

1. This device may not cause interference; and
2. This device must accept any interference, including interference that may cause undesired operation of the device.

Only operate the device in accordance with the instructions applied.

Changes or modification to this unit not expressly approved by the party responsible for compliance could void the user's authority to operate the equipment.

This device complies with FCC radiation exposure limits set forth for an uncontrolled environment. In order to avoid the possibility of exceeding the FCC radio frequency exposure limits, human proximity to the antenna shall not be less than 20cm (8 inches) during normal operation.

## NOTE

This equipment has been tested and found to comply with the limits for a Class B digital device, pursuant to part 15 of the FCC rules. These limits are designed to provide reasonable protection against harmful interference in a residential installation. This equipment generates uses and can radiate radio frequency energy and if not installed and used in accordance with the instructions, it may cause harmful interference to radio communications. However, there is no guarantee that interference will not occur in a particular installation. If this equipment does not cause harmful interference to radio or television reception, which can be determined by turning the equipment off and on, the user is encouraged to try to correct the interference by one or more of the following measures:

- Reorient or relocate the receiving antenna.
  - Increase the separation between the equipment and receiver.
  - Connect the equipment into an outlet on a circuit different from that to which the receiver is connected.
- Consult the dealer or an experienced radio/TV technician
- for help.



**The design and specifications are subject to change without prior notice for product improvement. Any updates to the manual will be uploaded to the service website, please check for the latest version.**

If you have any concerns, please contact us at the following:

Customer hotline: **(02) 8852-6868**

Text hotline: **+63 917-881-8982**

Email: **customerservice@kolinphil.com.ph**

Also, please like and follow us on social media accounts:

Facebook: kolinphilippines

Instagram: kolinphilippines

Youtube: kolinphilippines

Tiktok: kolinphilippines

Website: [www.kolinphil.com.ph](http://www.kolinphil.com.ph)

**KPI060325**



# Kolin Philippines Int'l, Inc.

## SERVICE CENTERS

BRANCH	ADDRESS	TEL. NO.
Bacolod	Door #A-2 & A-3 UTC Bldg., Alunan St., Brgy. 36, Bacolod City	(034) 466-9145
Cagayan De Oro	Door #3 De Oro Land Bldg., Julio Pacana St., Puntod, Cagayan de Oro City	(088) 557 - 7353
Cebu	Lot 758-B-1, P. Suico St. Upper Tabok, Mandaue City, Cebu	(032) 234 - 1844
Dagupan	Unit #1 107 Caranglaan District, Dagupan City, Pangasinan	(075) 529 - 0587
Davao	Blk 17 Lot 9, Calamansi St., Juna Subd., Matina, Davao City	(082) 272 - 0048
Iloilo	Door# 4,5 & 7, D' Appliance Arcade, South Fundidor, Molo, Iloilo City	(033) 337 - 5914
Pampanga	LRK Commercial Bldg., Jose Abad Ave., Lagundi, Mexico, Pampanga	(045) 455 - 2934

For More air conditioner tips, please like, share and follow us on our social media accounts:

Facebook : kolinphilippines  
Instagram : kolinphilippines  
Youtube : kolinphilippines  
Tiktok : kolinphilippines  
Website : [www.kolinphil.com.ph](http://www.kolinphil.com.ph)

### OFFICE

Kolin Bldg. 1854 Sta. Rita St.,  
Guadalupe Nuevo, Makati City, 1212  
Service Hotline: (632) 8852 - 6868

### PLANT

Blk 3 Lot 5, Main Drive First Cavite  
Industrial Estate, Langkaan 1,  
Dasmariñas City, Cavite  
Tel. No.: (046) 402-0793